

Final TAB Punchlist

Prepared by Jacob Davidson

Jan 21, 2025

Description

8 tasks in this report.

Contents

#126 [UNIT 504] [NEW] Equipment Fresh Air Tempering.	2
#125 [DUCT 500] [NEW] Air pattern deflections.	6
#124 [DUCT 999] [NEW] (MISC) Grilles are dirty	8
#123 [DUCT 507] [NEW] Ductwork is not fully insulated.....	11
#108 [UNIT 506] [NEW] Equipment GFI outlets.....	13
#73 [EXHA 508] [NEW] Exhaust fan G2 Drip Guard.....	16
#72 [UNIT 516] [NEW] Condensate piping pitch.....	18
#71 [UNIT 517] [NEW] Condensate piping construction.....	22

#126 [UNIT 504] [NEW] Equipment Fresh Air Tempering.

Status

Pending

Assignees

rodc@deansnyder.com

Sheet

M-601L

Type

Planned Work

Watchers

rodc@deansnyder.com

List

Turnover

Created

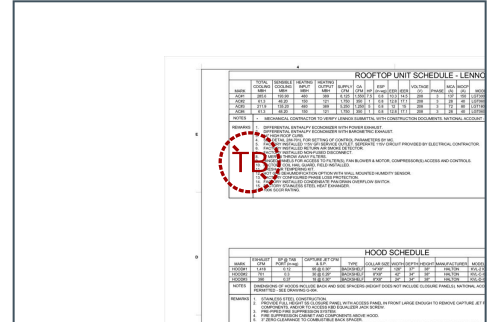
Jan 10, 2025 11:30 AM
jacobd@nationaltab.com

Description

Units with Fresh Air Tempering kits are to have the discharge sensor routed per specification into the discharge duct via wiring portal. If Lennox turn on FAH and set parameter #156 to 60 in Kitchen, 62 in Drive-Thru/Serving, & 63 in Dining/Play Area; then set parameters #157 to 14 & #158 to 300 on all.

Last Updated

Jan 15, 2025 3:58 PM



Comments

all 4 sensors have been moved past the first elbow, wired back into the units and sensors covered with insulation. Settings on RTU's have been checked

Jared Locke Jan 15, 2025

Photos

L05792_North Platte FSU (NE)

1902 South Jeffers Street, North Platte, Nebraska

L1020005792



IMG_9968

Jared Locke

Jan 14, 2025 2:32 PM



IMG_9967

Jared Locke

Jan 14, 2025 2:22 PM

L05792_North Platte FSU (NE)

1902 South Jeffers Street, North Platte, Nebraska

L1020005792



IMG_9966

Jared Locke

Jan 14, 2025 1:34 PM



IMG_9965

Jared Locke

Jan 14, 2025 11:51 AM

L05792_North Platte FSU (NE)

1902 South Jeffers Street, North Platte, Nebraska

L1020005792



IMG_9964

Jared Locke

Jan 14, 2025 11:01 AM

#125 [DUCT 500] [NEW] Air pattern deflections.

Status
Pending

Created
Jan 9, 2025 4:39 PM
jacobd@nationaltab.com

Sheet
M-001

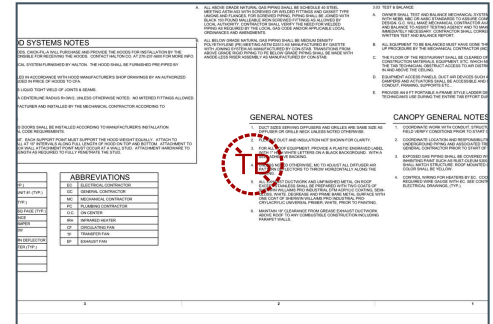
Type
Planned Work

Last Updated
Jan 10, 2025 12:08 PM

Description

Air pattern deflections are called to be changed on plans by MC to adhere to design intent. General note 4 on M-001 states "UNLESS NOTED OTHERWISE, MC TO ADJUST ALL DIFFUSER AIR PATTERN DEFLECTORS TO THROW HORIZONTALLY ALONG THE CEILING."

Photos



L05792_North Platte FSU (NE)

1902 South Jeffers Street, North Platte, Nebraska

L1020005792



IMG_5391

Jared Locke

Jan 10, 2025 12:08 PM

L05792_North Platte FSU (NE)

1902 South Jeffers Street, North Platte, Nebraska

L1020005792

#124 [DUCT 999] [NEW] (MISC) Grilles are dirty

Status

Pending

Start Date

Jan 9, 2025

Type

Planned Work

Created

Jan 9, 2025 12:32 PM
jacobd@nationaltab.com

Description

There is debris in the face of many of the diffusers. Go through and make sure grilles are clear of insulation and debris.

Last Updated

Jan 10, 2025 12:08 PM

Photos



IMG_5391

Jared Locke

Jan 10, 2025 12:08 PM



IMG_0562

Jacob Davidson

Jan 9, 2025 12:34 PM

L05792_North Platte FSU (NE)

1902 South Jeffers Street, North Platte, Nebraska

L1020005792



IMG_0565

Jacob Davidson

Jan 9, 2025 12:34 PM



IMG_0563

Jacob Davidson

Jan 9, 2025 12:34 PM

L05792_North Platte FSU (NE)

1902 South Jeffers Street, North Platte, Nebraska

L1020005792



IMG_0564

Jacob Davidson

Jan 9, 2025 12:34 PM

L05792_North Platte FSU (NE)

1902 South Jeffers Street, North Platte, Nebraska

L1020005792

#123 [DUCT 507] [NEW] Ductwork is not fully insulated.

Status

Pending

Start Date

Jan 8, 2025

Type

Planned Work

Created

Jan 9, 2025 12:31 PM
jacobd@nationaltab.com

Description

Ductwork has exposed metal ductwork in some areas needs to be fully wrapped.

Last Updated

Jan 10, 2025 12:09 PM

Photos



IMG_5398

Jared Locke

Jan 10, 2025 12:08 PM



IMG_0652

Jacob Davidson

Jan 10, 2025 11:44 AM

L05792_North Platte FSU (NE)

1902 South Jeffers Street, North Platte, Nebraska

L1020005792



IMG_0644

Jacob Davidson

Jan 9, 2025 12:34 PM

L05792_North Platte FSU (NE)

1902 South Jeffers Street, North Platte, Nebraska

L1020005792

#108 [UNIT 506] [NEW] Equipment GFI outlets.

Status
Pending

Start Date
Jan 8, 2025

Sheet
M-601L

Type
Planned Work

Created
Jan 8, 2025 4:41 PM
jacobd@nationaltab.com

Description

Equipment GFI outlet missing components (GFI itself, din rail with fuses) or not terminated/operational. Per the AC unit schedule, each unit should have a factory installed GFI outlet with a separate 115V circuit provided by the electrical contractor.

Last Updated
Jan 13, 2025 10:39 AM

The image shows a screenshot of a project schedule table. The table is titled "ROOFTOP UNIT SCHEDULE - LENNOX" and contains columns for "UNIT", "SERIAL", "STATUS", "START", "STOP", "COST", "COST PER HOUR", "COST PER MINUTE", "COST PER SECOND", "COST PER MINUTE", "COST PER SECOND", "COST PER MINUTE", "COST PER SECOND". A red circular stamp with the letters "TB" is overlaid on the table. Below the main table, there is another table titled "HOOD SCHEDULE" with similar columns.

Photos



2025_01_12T21_51_41
Jared Locke
Jan 13, 2025 10:39 AM



2025_01_12T21_51_37
Jared Locke
Jan 13, 2025 10:39 AM

L05792_North Platte FSU (NE)

1902 South Jeffers Street, North Platte, Nebraska

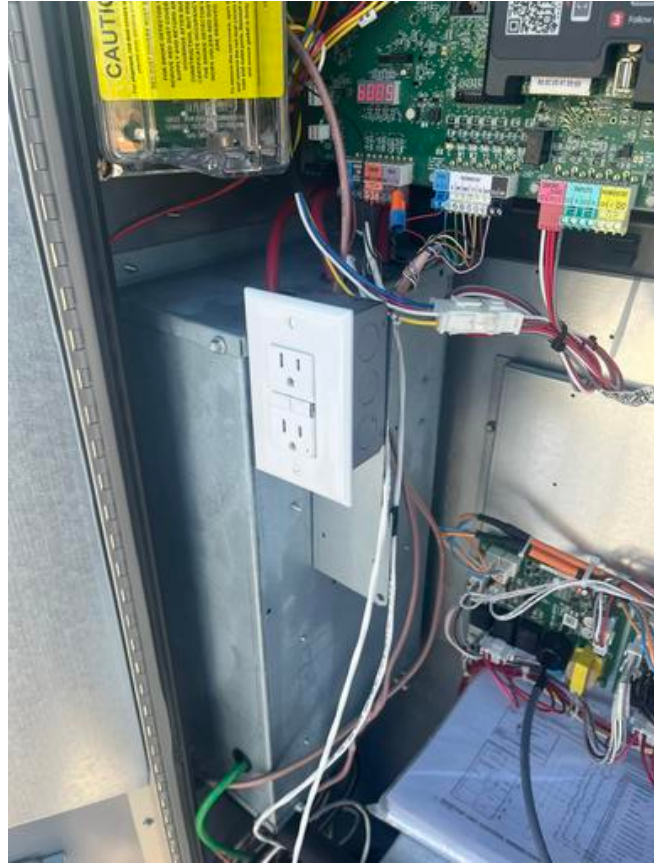
L1020005792



IMG_0635

Jacob Davidson

Jan 8, 2025 4:42 PM



IMG_0637

Jacob Davidson

Jan 8, 2025 4:42 PM

L05792_North Platte FSU (NE)

1902 South Jeffers Street, North Platte, Nebraska

L1020005792



IMG_0636

Jacob Davidson

Jan 8, 2025 4:42 PM



IMG_0638

Jacob Davidson

Jan 8, 2025 4:42 PM

#73 [EXHA 508] [NEW] Exhaust fan G2 Drip Guard.

Status
Pending

Assignees
rodc@deansnyder.com

Sheet
M-501

Type
Planned Work

Watchers
rodc@deansnyder.com

List
Turnover

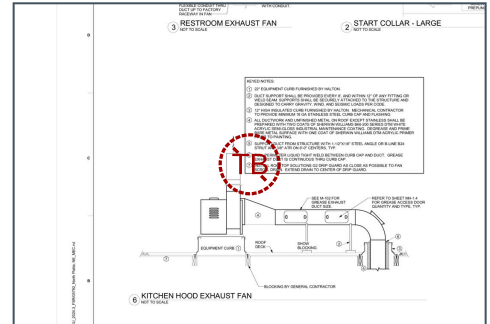
Start Date
Jan 7, 2025

Description
Exhaust fan G2 Drip Guard is missing.

Created
Jan 7, 2025 4:41 PM
jacobd@nationaltab.com

Last Updated
Jan 15, 2025 3:59 PM

Photos



L05792_North Platte FSU (NE)

1902 South Jeffers Street, North Platte, Nebraska

L1020005792



Resized_20250115_100226_1736970221099

Jared Locke

Jan 15, 2025 3:58 PM



Resized_20250115_094946_1736970222241

Jared Locke

Jan 15, 2025 3:58 PM



IMG_0578

Jacob Davidson

Jan 7, 2025 4:43 PM



IMG_0577

Jacob Davidson

Jan 7, 2025 4:43 PM

L05792_North Platte FSU (NE)

1902 South Jeffers Street, North Platte, Nebraska

L1020005792



7

Jared Locke

Jan 13, 2025 10:49 AM



6

Jared Locke

Jan 13, 2025 10:49 AM

L05792_North Platte FSU (NE)

1902 South Jeffers Street, North Platte, Nebraska

L1020005792



5

Jared Locke

Jan 13, 2025 10:49 AM



IMG_0582

Jacob Davidson

Jan 7, 2025 4:42 PM

L05792_North Platte FSU (NE)

1902 South Jeffers Street, North Platte, Nebraska

L1020005792



IMG_0579

Jacob Davidson

Jan 7, 2025 4:42 PM



IMG_0571

Jacob Davidson

Jan 7, 2025 4:42 PM

L05792_North Platte FSU (NE)

1902 South Jeffers Street, North Platte, Nebraska

L1020005792

#71 [UNIT 517] [NEW] Condensate piping construction.

Status
Pending

Start Date
Jan 7, 2025

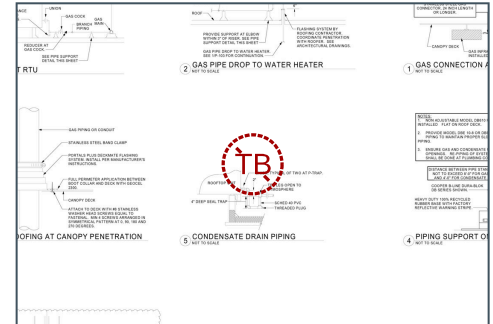
Sheet
M-503

Type
Planned Work

Created
Jan 7, 2025 4:35 PM
jacobd@nationaltab.com

Description
Equipment condensate piping or p-trap is not constructed per normal CFA specifications.

Last Updated
Jan 13, 2025 10:51 AM



Comments

Redid condensate lines

Rod Cagley Jan 10, 2025

Photos

L05792_North Platte FSU (NE)

1902 South Jeffers Street, North Platte, Nebraska

L1020005792



7

Jared Locke

Jan 13, 2025 10:51 AM



1

Jared Locke

Jan 13, 2025 10:51 AM

L05792_North Platte FSU (NE)

1902 South Jeffers Street, North Platte, Nebraska

L1020005792



6

Jared Locke

Jan 13, 2025 10:51 AM



5

Jared Locke

Jan 13, 2025 10:51 AM



2

Jared Locke

Jan 13, 2025 10:51 AM



4

Jared Locke

Jan 13, 2025 10:51 AM

L05792_North Platte FSU (NE)

1902 South Jeffers Street, North Platte, Nebraska

L1020005792



3

Jared Locke

Jan 13, 2025 10:51 AM



IMG_0567

Jacob Davidson

Jan 7, 2025 4:42 PM



IMG_0569

Jacob Davidson

Jan 7, 2025 4:42 PM



IMG_0568

Jacob Davidson

Jan 7, 2025 4:42 PM

L05792_North Platte FSU (NE)

1902 South Jeffers Street, North Platte, Nebraska

L1020005792



IMG_0566

Jacob Davidson

Jan 7, 2025 4:42 PM